

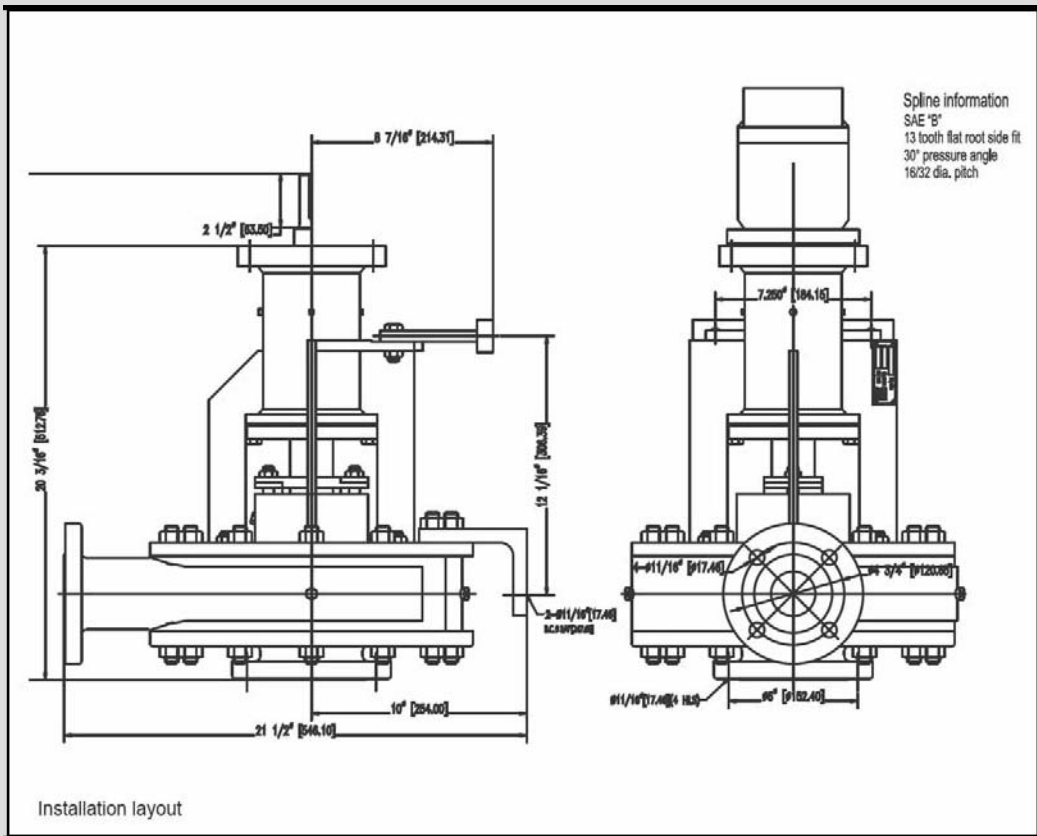


## SERVApump® 2X3

The SERVApump 2X3 centrifugal pump is the perfect medium weight pump and is built to last in the most extreme conditions. It requires minimal mounting space, while being built on a heavy steel frame and can be mounted either horizontally or vertically. The pump is available with either SAE "C" or "B" flange and splines, as well as a key driven shaft. Built with segmented construction it allows the customer to purchase only those parts necessary for repair.

The pump comes with sacrificial front and rear wear rings. Bronze wear rings can be changed if necessary. Changing the rotation on the SERVApump 2x3 is easily accomplished by simply removing, turning, and repositioning the volute, and changing the impeller to match the desired direction of rotation. The closed impellers supply more pressure and high efficiency and are available in either a clockwise or counterclockwise rotation. The impeller is secured to the shaft by a superior designed locking system.

Packing is available in either lip seals or square braid packing. Lip seals provide efficient service with a minimal amount of attention, while square packings are available for more severe service conditions, and can easily be replaced without dismantling the pump. Bearings are heavy duty double row inboard for radial thrusts, and a single row outboard for axial thrusts.



SERVApump® 2X3

