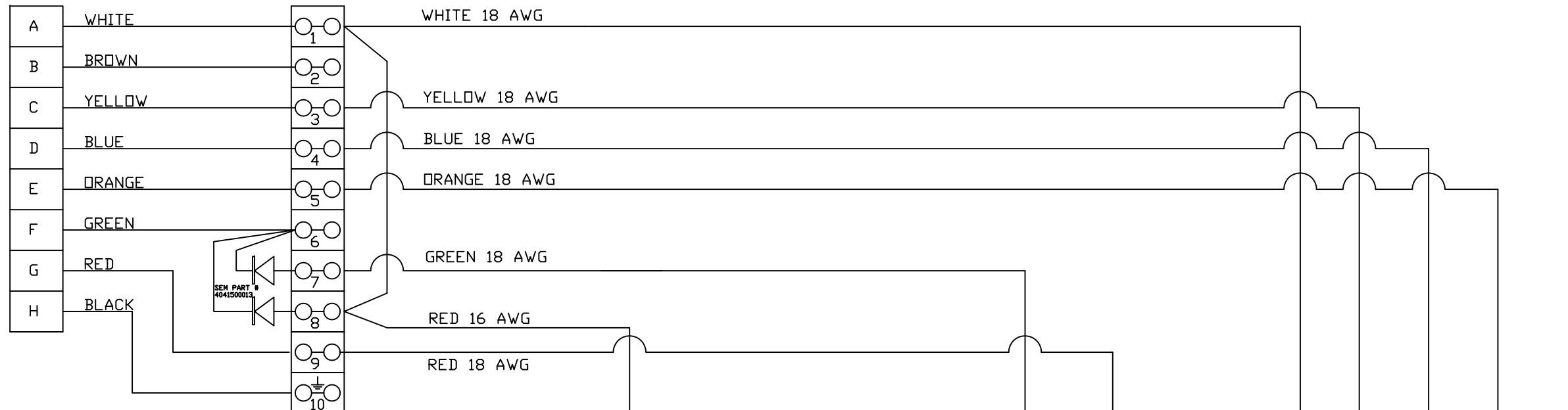


SEM PART #  
404100035  
VENDOR PART #  
MS3106A22-18S

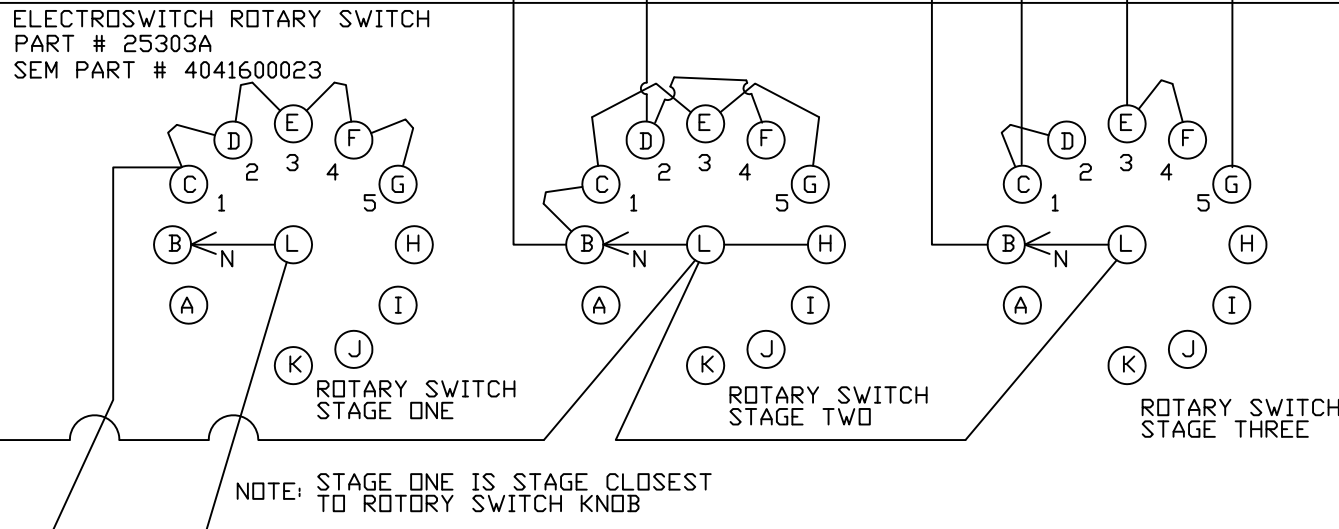
ALLISON  
6000 SERIES  
TRANSMISSION  
CONNECTOR

TS #7 A  
TRANSMISSION

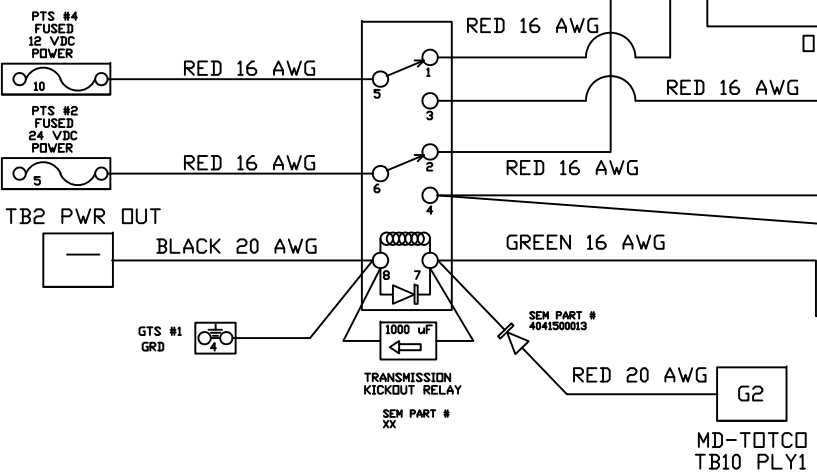


HONEYWELL TOGGLE SWITCH  
PART # 2NT1-3  
SEM PART # 4041600015  
QUICK TO NEUTRAL  
SWITCH  
ON

ROTARY SWITCH  
FOR ALLISON  
6000 SERIES  
TRANSMISSION



NOTE RELAYS 1 AND 2 ARE  
TYPICAL POTTER & BRUMFIELD  
RELAY PART # K10P-11015-24  
SEM PART # 4040700003  
RELAY BASE PART # 27E895  
SEM PART # 4040700005  
HOLD DOWN SPRING PART # 20C426  
SEM PART # 4040700004



ALLISON  
6000 SERIES  
TRANSMISSION  
FOR FAIL TO NEUTRAL

- NEUTRAL -- SOLENOID F
- 1 GEAR -- SOLENOIDS C AND F
- 2 GEAR -- SOLENOID C
- 3 GEAR -- SOLENOIDS D AND F
- 4 GEAR -- SOLENOID D
- 5 GEAR -- SOLENOIDS E AND F

ALLISON  
6000 SERIES  
TRANSMISSION  
FOR FAIL TO RANGE

- NEUTRAL -- SOLENOID F AND A
- 1 GEAR -- SOLENOIDS C AND F
- 2 GEAR -- SOLENOID C AND G
- 3 GEAR -- SOLENOIDS D AND F
- 4 GEAR -- SOLENOID D AND G
- 5 GEAR -- SOLENOIDS E AND F

ALLISON  
6000 SERIES  
TRANSMISSION

24 VDC COIL = HIGHER THAN 50 OHM  
12 VDC COIL = LESS THAN 50 OHM

DRIVER SIDE TRANSMISSION  
TWIN CEMENTER

DRW NO: XXX XX XXXXX      PAGE: 1 OF 1

REV: A      DATE: X-X-X      DRWN. JS      APR. \_      DATE: \_

ASSY #:  
S.O. #:  
PROJ #: 70088