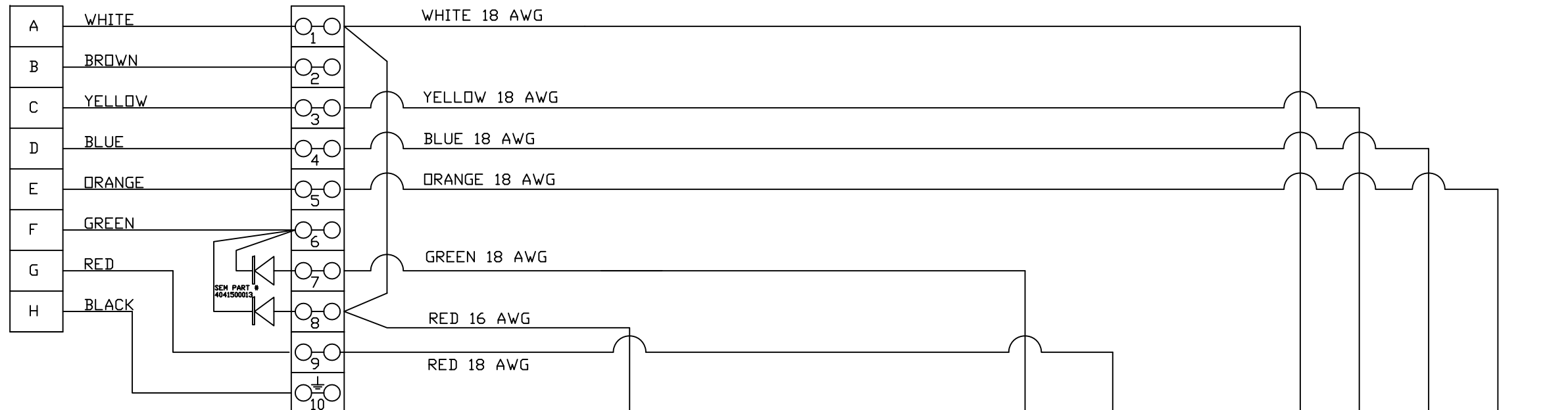


SEM PART #
404100035
VENDOR PART #
MS3106A22-18S

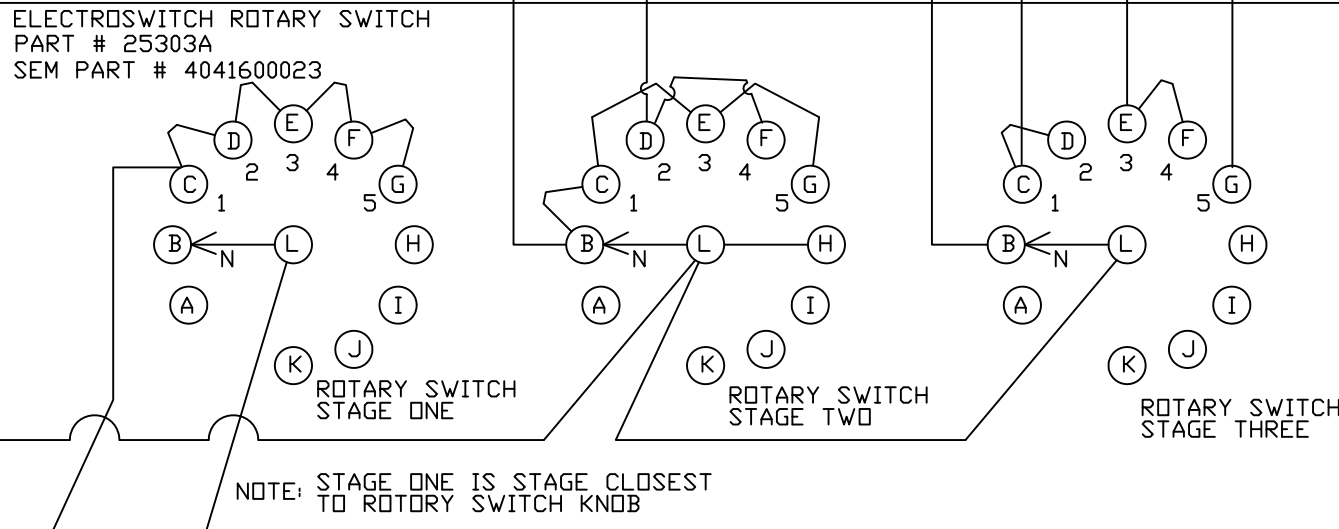
ALLISON
6000 SERIES
TRANSMISSION
CONNECTOR

TS #7 A
TRANSMISSION

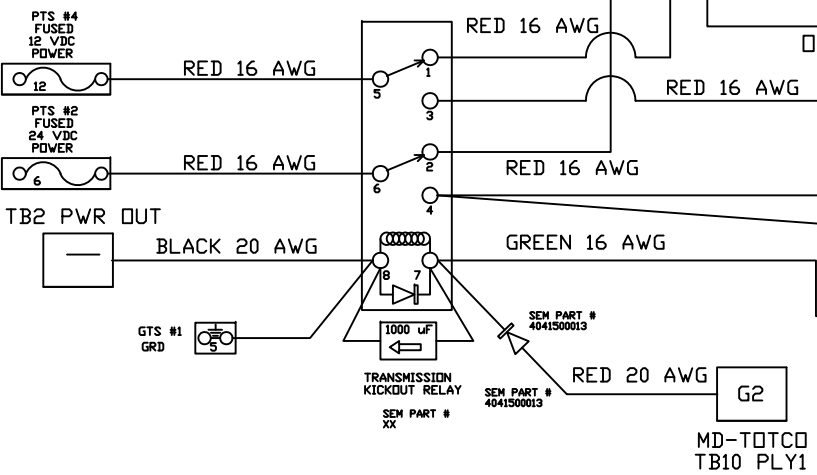


HONEYWELL TOGGLE SWITCH
PART # 2NT1-3
SEM PART # 4041600015
QUICK TO NEUTRAL
SWITCH
ON

ROTARY SWITCH
FOR ALLISON
6000 SERIES
TRANSMISSION



NOTE RELAYS 1 AND 2 ARE
TYPICAL POTTER & BRUMFIELD
RELAY PART # K10P-11015-24
SEM PART # 4040700003
RELAY BASE PART # 27E895
SEM PART # 4040700005
HOLD DOWN SPRING PART # 20C426
SEM PART # 4040700004



ALLISON
6000 SERIES
TRANSMISSION
FOR FAIL TO NEUTRAL

- NEUTRAL -- SOLENOID F
- 1 GEAR -- SOLENOIDS C AND F
- 2 GEAR -- SOLENOID C
- 3 GEAR -- SOLENOIDS D AND F
- 4 GEAR -- SOLENOID D
- 5 GEAR -- SOLENOIDS E AND F

ALLISON
6000 SERIES
TRANSMISSION
FOR FAIL TO RANGE

- NEUTRAL -- SOLENOID F AND A
- 1 GEAR -- SOLENOIDS C AND F
- 2 GEAR -- SOLENOID C AND G
- 3 GEAR -- SOLENOIDS D AND F
- 4 GEAR -- SOLENOID D AND G
- 5 GEAR -- SOLENOIDS E AND F

ALLISON
6000 SERIES
TRANSMISSION

24 VDC COIL = HIGHER THAN 50 OHM
12 VDC COIL = LESS THAN 50 OHM

PASSENGER SIDE TRANSMISSION
TWIN CEMENTER

ASSY #:
S.O. #:
PROJ #: 70088