



SERVA Frac Units

The SERVAgroup SG-T2250F Fracturing Pump is a heavy-duty pump package mounted on a 3-axle off-road trailer. The unit is comprised of a trailer, power package, and quintaplex pump. The package is for highly mobile land operations.

The power package is comprised of (1) one 2250 Hp diesel engine with automatic transmission. The engine and transmission combination has been reviewed by the component manufacturers for correct application and installation.

Specifications

Engine.....Caterpillar 3512B Tier 1
 Rated Power Output (Gross) 2,250 Hp (1678 bkW) @ 1,900 rpm

Temperature

- Minimum ambient operating..... -20°C (-4°F)
- Maximum ambient operating 46°C (115°F)

Pressure Range

- Maximum working pressure 689 kg/cm³ (9,800 psi) w/5" plunger pump
- Maximum test pressure 689 kg/cm³ (9,800 psi) w/5" plunger pump

Flow Rate

- Maximum theoretical total 4247 lpm (26.71 BPM)

Continuous Working Time

- Rated WP of 689 kg/cm³ (9,800 psi)3 hours
- Maximum flow rate>2 hours

Transmission

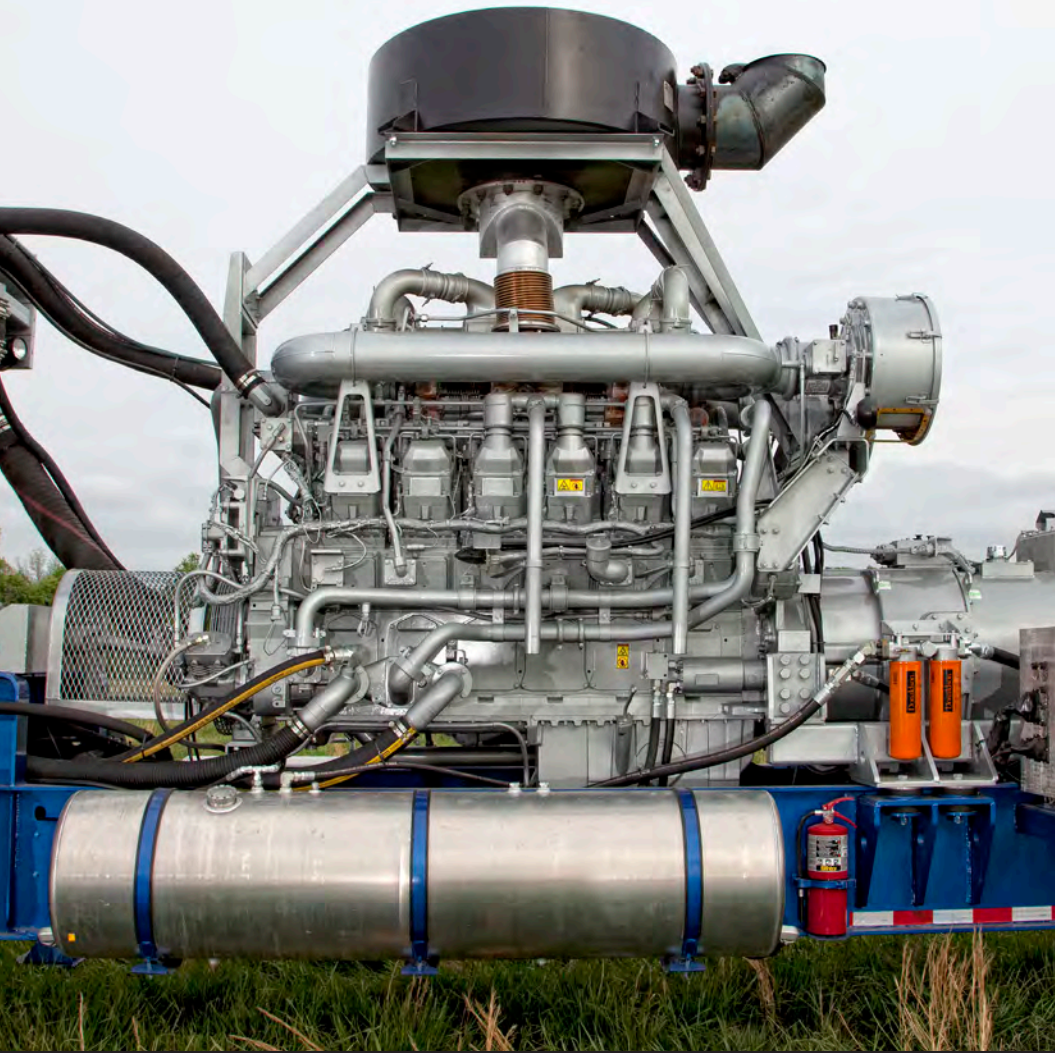
- Caterpillar TH48-E80 automatic transmission provides 7 forward gears and 1 warm-up gear. Remote shifting is provided from the operators console and remote control station. Transmission comes with OEM oil cooler installed.
- Net input power (max.).....2250 Hp (1678 kW)
- Net input speed (max.) 2,100 rpm
- Net input torque (max.)6,300 lb.-ft (8568 N-m)
- Torque converter Series TC58-ESLF
- Stall torque ratio at rated speed 2.20

Call SERVAgroup today 940-761-3361

1500 Fisher Road • Wichita Falls, TX 76305 • info@SERVAgroup.com

SERVA SERVAgroup

www.servagroup.com



Specifications

Quintaplex Pump

- Model Number QWS 2500SD
- Plunger Size 5 in.
- Discharge Connection 3 in. 1502

Trailer

- Heavy-duty 2-axle oilfield trailer with airbag suspension
- (8) 11r x 22.5 off-road tires mounted on 8 in. x 22.5 in. hub-piloted steel "bud" style wheels

Electrical System

- 24-volt

Controls & Instrumentation

- Unit controls are located in an operator's panel on the right side of the unit. The console is designed for severe duty condition and is sealed for operation in all weather.
- Remote control panel is provided with the unit. This system allows the unit to be run via a wired remote from up to 100 ft. away.



Call SERVAgrou today 940-761-3361

1500 Fisher Road • Wichita Falls, TX 76305 • info@SERVAgrou.com

SERVA SERVAgrou

www.servagrou.com